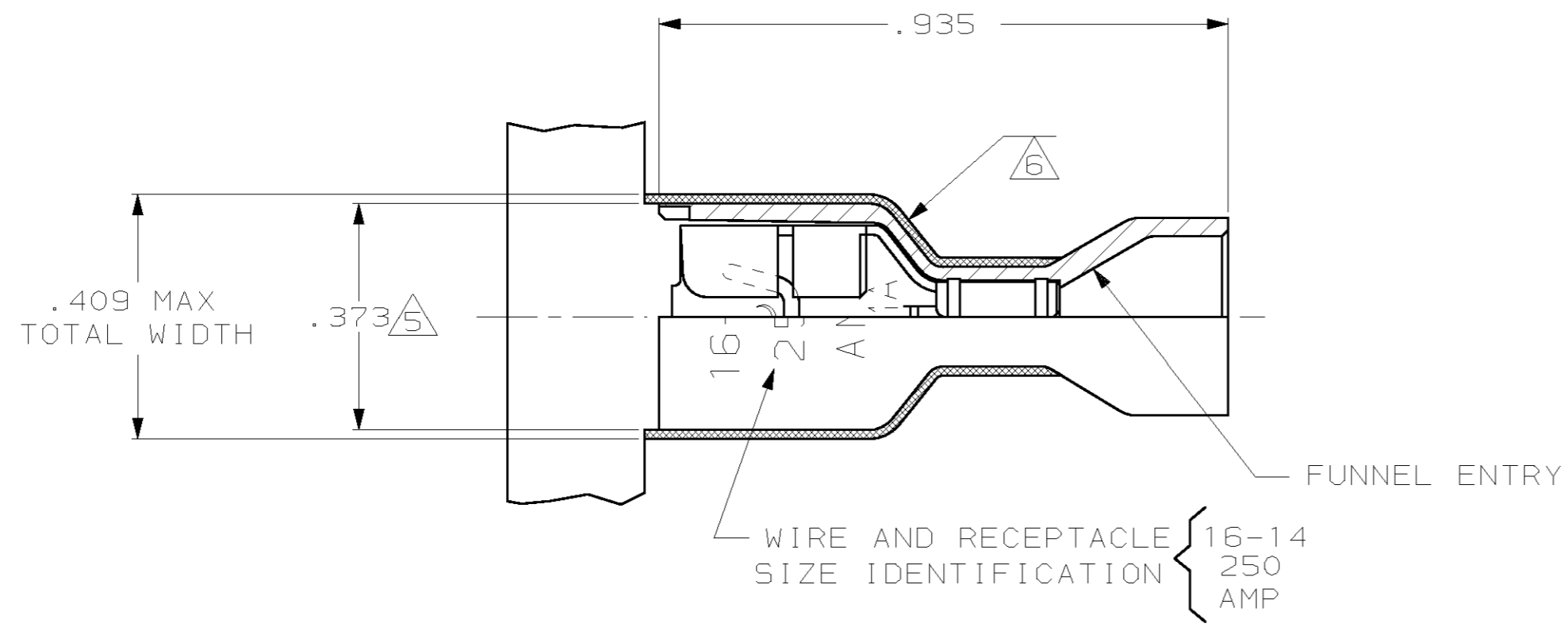
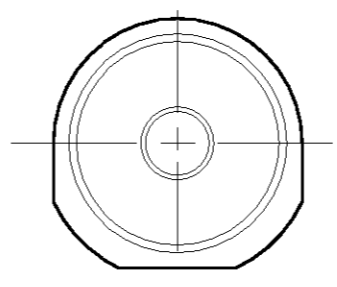
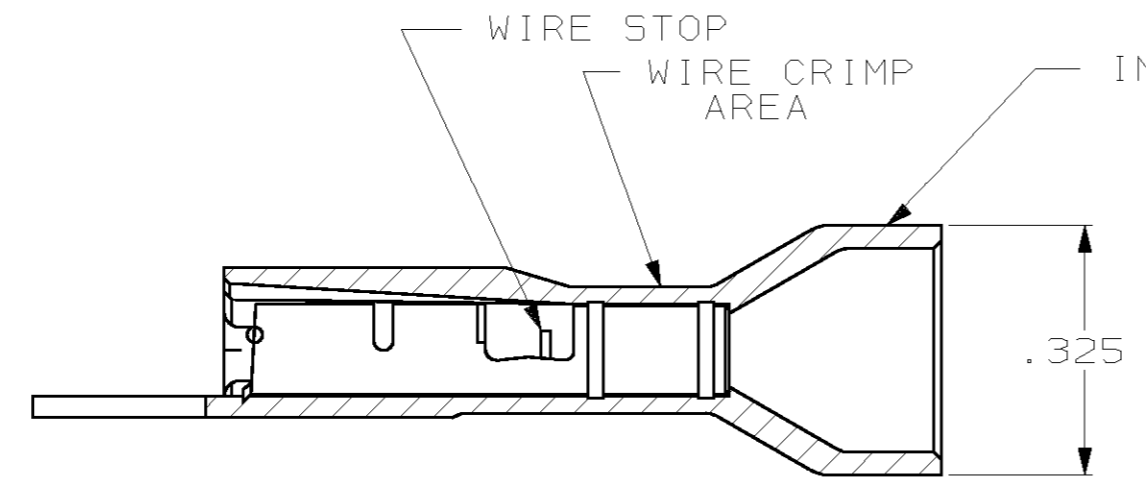
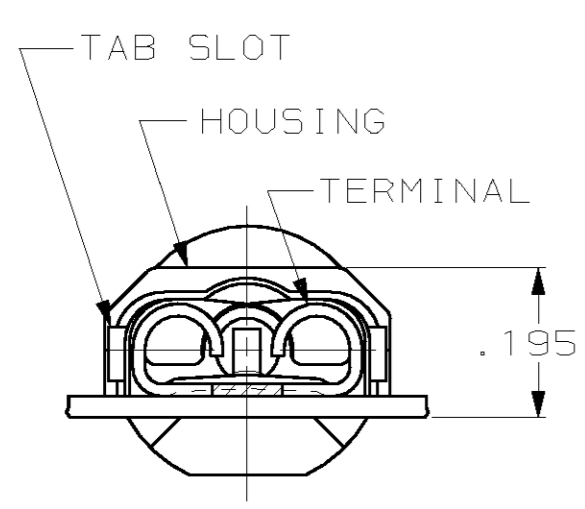


THIS DRAWING IS UNPUBLISHED. RELEASED FOR PUBLICATION .19  
 BY AMP INCORPORATED. ALL RIGHTS RESERVED.

LOC	DIST	REVISIONS					
AF	50	P	LTR	DESCRIPTION	DATE	DWN	APVD
		N		ADDED 9-2 PER 063A-0731-00	21NOV00	JR	JH



- 1 MATES WITH .032±.001×.250 TAB
- 2 WIRE STRIP LENGTH .281
- 3 INSULATION SIZE .260 MAX DIA
- 4 CONTINUOUS STRIP ON REELS
- 5 DIMENSION DOES NOT INCLUDE TRIM BURR
- 6 .015 MAX CARRIER TRIM BURR PER SIDE IS ALLOWABLE IN THE SHADED AREA
- 7 PRELIMINARY - NOT FOR PRODUCTION



STANDARD	HOUSING: NYLON, COLOR-BLACK RECEPTACLE: #3 HARD BRASS, TIN .000080 MIN	9-520140-2
BULK	HOUSING: NYLON, COLOR-BLUE TRANSLUCENT RECEPTACLE: #3 HARD BRASS, TIN .000080 MIN	5-520140-2
STANDARD	HOUSING: NYLON, COLOR-BLUE TRANSLUCENT RECEPTACLE: #3 HARD PH BRONZE, TIN .000080 MIN	3-520140-4
STANDARD	HOUSING: NYLON, COLOR-BLUE TRANSLUCENT RECEPTACLE: #3 HARD BRASS, TIN .000080 MIN	3-520140-2
PACKAGING	MATERIAL & FINISH	PART NO.

THIS DRAWING IS A CONTROLLED DOCUMENT.		DWN JR RUTH 21NOV00	AMP Incorporated Harrisburg, PA 17105-3608													
DIMENSIONS: INCHES		CHK MS FEHER 21NOV00														
TOLERANCES UNLESS OTHERWISE SPECIFIED:		APVD J HUMMEL 21NOV00														
<table border="1"> <tr><td>0 PLC</td><td>±-</td></tr> <tr><td>1 PLC</td><td>±-</td></tr> <tr><td>2 PLC</td><td>±-</td></tr> <tr><td>3 PLC</td><td>±.015</td></tr> <tr><td>4 PLC</td><td>±-</td></tr> <tr><td>ANGLES</td><td>±-</td></tr> </table>		0 PLC	±-	1 PLC	±-	2 PLC	±-	3 PLC	±.015	4 PLC	±-	ANGLES	±-	NAME J HUMMEL	RECEPTACLE ASSY, ULTRA-FAST, .250 SERIES, 16-14 AWG	
0 PLC	±-															
1 PLC	±-															
2 PLC	±-															
3 PLC	±.015															
4 PLC	±-															
ANGLES	±-															
MATERIAL SEE TABLE		FINISH SEE TABLE	PRODUCT SPEC 108-2043	RESTRICTED TO												
			APPLICATION SPEC 114-2123	SIZE A2												
			WEIGHT -	CAGE CODE 00779												
			CUSTOMER DRAWING	DRAWING NO 520140												
			SCALE 4:1	SHEET 1 OF 1												
				REV N												

520140